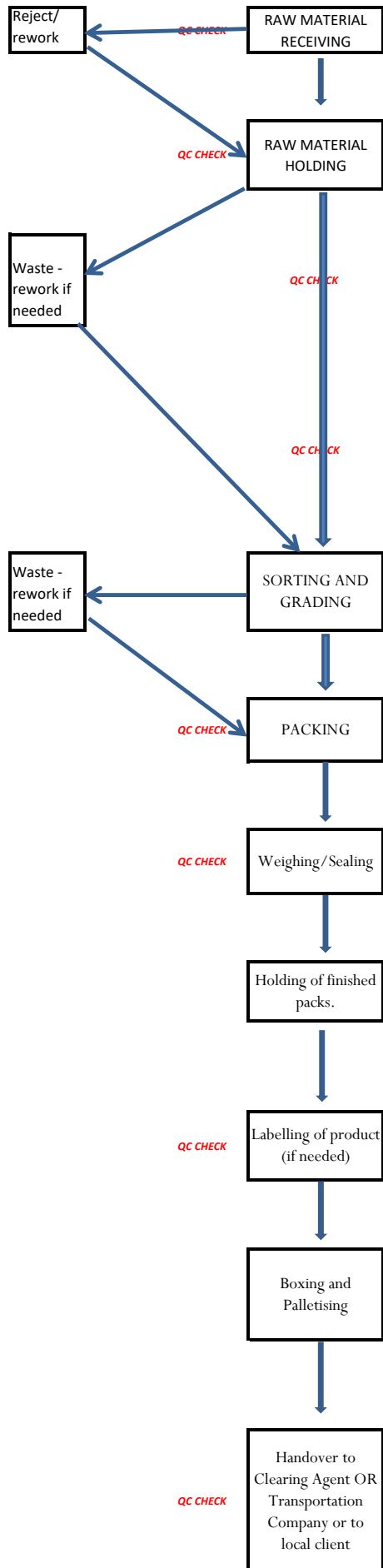


PROCESS FLOW STEP DIAGRAM



Cold room temp. 7-10oC. Product pre-cooled and held for in the cold room for a maximum of 72hours OR as per customer specification.

Holding of finished packs in ambient conditions. Keep the product room temp of 16 - 18°C

Pack products as per customer's specification room temp 16 - 20°C

Products weighed to customer specification. Room Temp. 16 - 20 °C

Cold room temp. 1 - 4 °C. Product held for in the cold room for a maximum of 72hours OR as per customer specification.

Coldroom temperature 1 - 4 °C

Product placed in final packaging and outer labels applied. Label information includes traceability information, customer, product name and weight, and end user instructions